

## Private Idaho Email

---

### To PGP Encrypt a message:

Compose the message in the Message text box.

In the To: text box, enter the PGP user ID of person you'll be sending the message to. This is usually an e-mail address. You must have already added the person's key to your public key ring. You can also click on the To box to access your *contacts* or your *PGP Key ring*.

From the PGP menu, choose the 'Encrypt message' command.

---

### To PGP Decrypt a message:

Click on the *PGP ->Decrypt or Verify a Message* or (Ctrl-D) menu item.

Private Idaho will interpret the encrypted message, and prompt you accordingly. That is if the message is conventionally encrypted then you will be prompted for a password. The same will occur if the message has been encrypted with a Private Key. In this case you will be prompted for the pass phrase associated with that Public Key.

---

### To Sign a message:

There are two ways to sign a message. One way is to clear-sign a message. This method leaves the text alone, but wraps it with a signature. Signing the message must be the last step as the signature depends on the contents of the message. The second way is to sign an encrypted file. Either way, the intent is to let the recipient know that you are the one who created the message because it requires your secret key and password to compute the signature.

#### To sign a message:

1. Compose the message in the Message text box.
2. From the PGP menu, choose the 'Clear sign message' or 'Encrypt and Sign' command.
3. PGP will run in the DOS window. Enter your passphrase.

A signature is now attached to the message.

---

### To Send a message:

If you have a connection to the Internet you can send a message directly from Private Idaho Mail.

#### To send a message:

1. Compose the message in the Message text box.
2. In the To: text box, enter the e-mail address of the person you'll be sending the message to.
3. Make sure you have a connection to the Internet.
4. Select the Send button (or choose 'Send' from the Message menu).

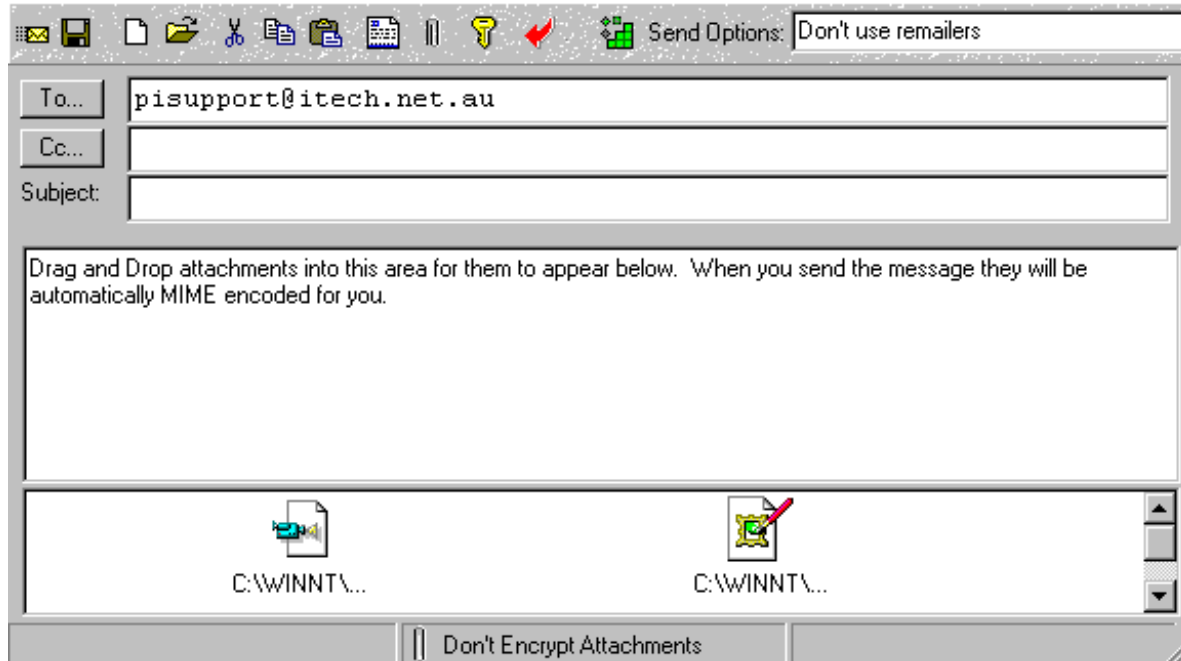
**Note:** Before sending a message, you need to provide information about your e-mail server. From the File menu, choose the 'Options' command.

---

## Sending an Attachments

### Inserting into Message

The best way of inserting an attachment into a message is to simply **drag and drop** object into the message area. The attachment will automatically be loaded into a tray at the bottom of the message area.



### Sending the Message - Direct

Once the attachment is placed into the message you can send it directly or use a remailer. If you send it directly it will be forwarded as a standard MIME attachment which will be recognized by most email clients.

### Sending the Message - Through a Remailer

If you decide to send the message through a remailer, the attachment will be converted to coded text and instated into your message area automatically and sent as a coded text message. Private Idaho needs to do this as remailers generally don't understand MIME encoding but will pass normal text messages. If you receive a MIME encoded message, Private Idaho will attempt to decode it, but if this is not successful, you have a manual way of doing it by clicking of the **Decode MIME Message** toolbar button.

**Note that because it is going through a remailer, the text and the attachment will be encrypted so you do not need to encrypt the attachment before sending through the remailer. If however you want the text to be received as plain text and the attachment encrypted then you should set the appropriate option below.**

### Encrypting Attachments

To encrypt an attachment you will need to select the appropriate option from the PGP - Attachments options. You have the option of encrypting the attachments either using the recipient's public key or through conventionally encrypting. If you use conventional encrypting you will obviously need to inform the recipient of the passphrase.

### **Sending or Giving out your Public Key:**

Before someone can send you an encrypted message, they need a copy of your public key. To send a copy of your key:

1. From the PGP-Keys menu, choose the 'Insert key in message' command.
2. Select your key from the user ID dialog box and click OK.
3. PGP will run and fetch the key from your public key ring.
4. The public key is inserted in the Message text box.

You can now send the key to someone you want to privately correspond with.

---

### **Sending or Getting your Public Key to a Key Server:**

You can send your Public Key to any well known Key Server so that other people can access it and send you encrypted email. Before someone can send you an encrypted message, they need a copy of your public key. To send a copy of your key to the key server:

1. From the PGP-Keys menu, choose the 'Submit to Key Server' command.
  2. Select your key from the user ID dialog box and click OK.
  3. PGP will run and fetch the key from your public key ring and send it to the server.
- 

### **Adding a PGP Key to your Public Key Ring:**

Before you can send someone an encrypted message, you need a copy of their public key. To add a copy of your key:

1. Copy the public key (either from an e-mail message or key server) and paste it into the Message text box.
  2. From the Keys menu, choose the 'Add key from message' command.
  3. PGP will interact with the PGP SDK and the key is added to your public key ring. The status bar will indicate if the action was successful.
- 

### **Removing a PGP Key from your Public Key Ring:**

To remove a key from your public key ring:

1. Run PGPKKeys.
  2. Select the key to remove press the 'Delete' key.
-

### To Create A Key Pair:

If you'd like to create a PGP secret and public key to use with a Nym or to encrypt a message then:

1. Use the PGP Keys Utility that comes with PGP
2. Click on the Keys, New Key menu, to step through a key creation process.

**Hint:** Use a key size of 1024 bits or higher and if you want to use remailer, then you should choose to create an RSA key as many remailers still use PGP 2.6.x.

---

### Sending an Anonymous Message:

You can send someone a message without revealing your identity by using an anonymous remailer. To send an anonymous message:

1. Compose the message in the Message text box.
2. In the To: text box, enter the e-mail address of the person you'll be sending the message to.
3. From the Remailers drop down, choose the type of remailer to use.
4. Select the remailer to send the message through from the Remailer drop-down list. Selecting 'chain' routes the message through several remailers. If you choose to chain, the first remailer you choose will be used first, the second next and so on.
5. From the Message menu, choose the 'Append info' command. This formats the message for sending through a remailer. If you selected 'chain,' a dialog box will prompt you for the remailers to use.
6. Send the message.

**Note:** The Cyperpunk type remailers support a variety of advanced features. Refer to the on-line help.

---

### Posting a USENET Message:

To post a USENET message anonymously, use a mail2news service:

1. If you wish for the post to be anonymous, then first create a Nym account.
2. Next, create the text of the message. If you need to insert an enclosure or bitmap or file, then from the *File - Encode a File into the Message Area* . Select a file and ensure you choose the correct encoding scheme.
3. Then, from the menu *Newsgroups - mail2news - Prepare a mail2news message using a Nym* fill in the appropriate information. Some of the fields do not require valid information, such as Message ID, however the post may be rejected if this information is not there.
4. Now select the mail2news service and press ok.

Private Idaho will now encrypt the message area and prepare the message. You can now send the message directly or via a remailer if you wish.

### Updating Remailer Info:

To update remailer info:

1. Make sure you have a Net connection.
2. From the drop down selector box, select either *Use Type 1 Remailers*, for CyperPunk, or select '*Use Type 2 Remailers*' for Mixmaster.
3. Then choose the 'Update remailer info' command.

Private Idaho Mail will connect to Web page URL that you have selected and download the current remailer data and update the remailer list box.

---

Under construction

---

### Sending a message using your Nym

Once you've created a Nym account, you can send messages through it. To do this:

1. Compose the message in the Message text box.
  2. In the To: text box, enter the e-mail address of the person you'll be sending the message to.
  3. From the Nym menu, choose the 'Prepare Nym message' command.
  4. Select the Nym account to use and click OK.
  5. Send the message either directly or using a CyperPunk for Mixmaster remailer.
- 

Under construction

---

Under construction

---

Under construction

---

### Browsing the Web Anonymously

It's very easy for someone to log Web pages you visit. Community Connexion (c2.org), has a free Web anonymizer service as does anonymiser.com

---

## Creating a Nym Reply

You now have the option of providing a PGP passphrase that will be used to provide extra encryption to any mail sent to you and hide your association with the Nym you are using.

When the nym server receives e-mail addressed to your nym, it encrypts it using your Nym Public Key ID and also conventional encrypts the message to protect your association with the Nym you are using.

The 'Passphrases' below will be used by each remailer you choose. The message is then forwarded to the e-mail address you previously specified in Step 4). You'll need to remember these passphrases to decrypt mail forwarded to you from the nym server. Don't use spaces in the passphrase."

Because each remailer in your reply block will apply this conventional encryption, it is safer if you use a different passphrase for each remailer hop. For example, if you are going to use only two remailers, then enter two pass phrases. If you omit any then the first passphrase will be used for all the other remailers. Lastly, to decrypt the message you will need to apply the passphrases in reverse order. For example, if you decided to have the Nym server encrypt the reply block with the passphrase 'Jack' and the first remailer with 'John' and the last with 'Jill' then you would need to apply the passphrases in the reverse order to decrypt the messages, i.e. 'Jill -> John -> Jack'.

---

## Creating a Reply Block using your email address

If you wish the encrypted reply to come to your email address then just place your email in the address text box.

---

## Using a NewsGroup in your Reply Block

If you wish the encrypted reply to go to a newsgroup, then place the name of the newsgroup in the text box provided, plus the news service. All you then need do is go to the newsgroup, say alt.anonymous.messages, or anything else you want to use, and then download your mail.